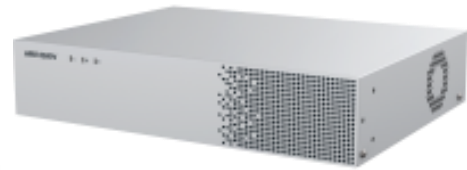


iDS-6716NXI-M1/AI(B) NVS DeepinMind



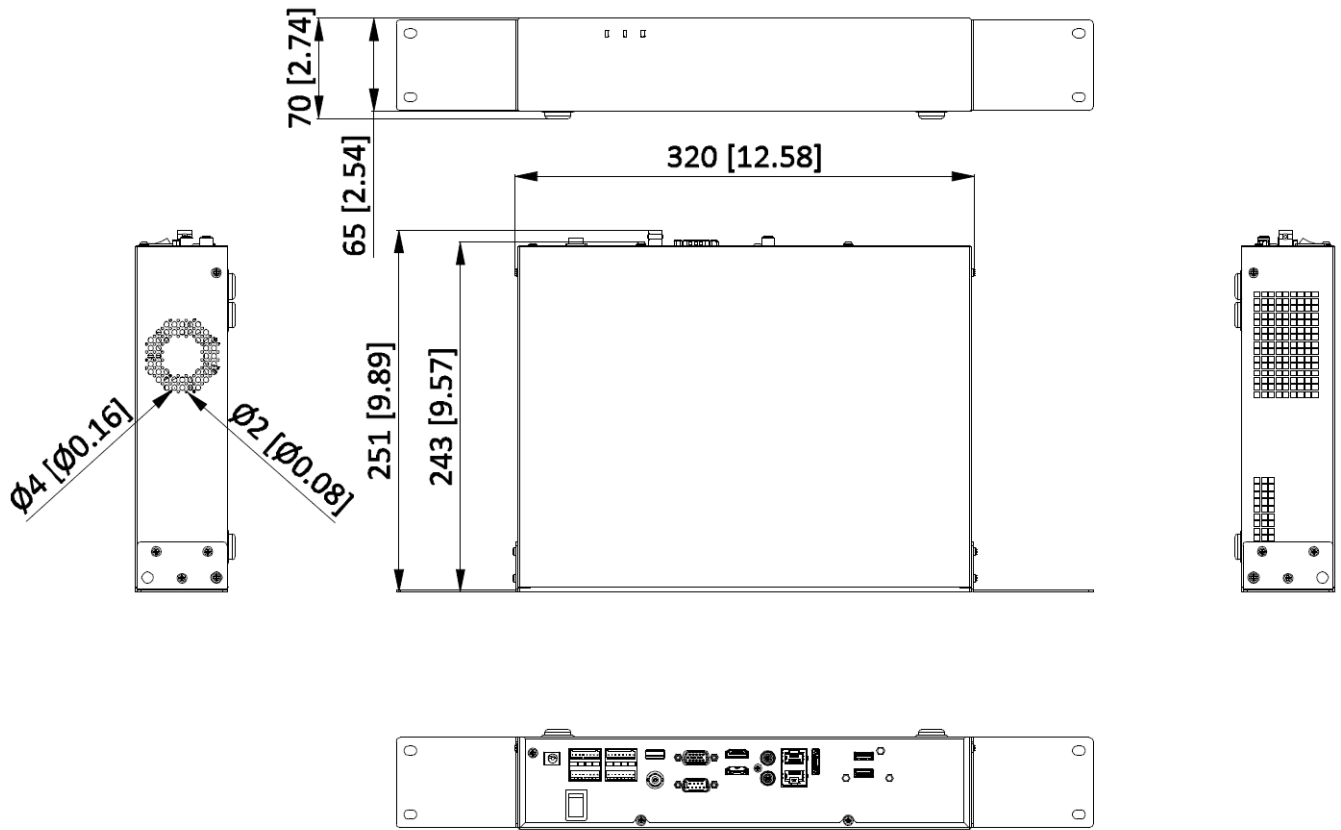
- Up to 2-ch@32 MP/2-ch@24 MP/4-ch@12 MP/8-ch@8 MP/16-ch@4 MP decoding capacity
- H.265+/H.265/H.264+/H.264 video formats
- Up to 16-ch IP cameras can be connected
- Deep learning based video analytics for not wearing hard hat detection and event detection, including people running detection, people gathering detection, violent motion detection, using mobile phone detection, etc

▪ Specification

AI Open Platform Performance	
Live Video Analysis	Up to 4-ch (4-ch@4 MP, 2-ch@6 MP, 1-ch @8 MP)
Auto-Switch Video Analysis	Up to 16-ch (switching time should between 10 to 3600 sec)
Scheduled Capture Analysis	Up to 16-ch (switch time should between 3 to 3600 seconds)
Product Performance	
Video Analysis Capacity	<p>Pre-installed AI Algorithm Package</p> <p>Human (3 Algorithm models)</p> <ol style="list-style-type: none"> 1. Facial recognition: 2. People counting: regional people counting, people counting statistics 3. PPE: safety helmets and reflective vests detection <p>Vehicle (2 Algorithm models)</p> <ol style="list-style-type: none"> 1. Vehicle attributes: vehicle brand,vehicle color, vehicle type 2. Non-motorized vehicle detection: motorcycle, bicycles <p>Dangerous Event(2 Algorithm models)</p> <ol style="list-style-type: none"> 1. Fire and smoke detection 2. Occupation of fire escape <p>Behaviour (3 Algorithm models)</p> <ol style="list-style-type: none"> 1. Street level behaviour : falling down detection, people gathering detection, fast moving detection, physical conflict detection 2. Indoor: playing mobile phone, number of people exception, overstaying detection 3. Perimeter: intrusion detection, line crossing detection, region entrance detection, region exiting detection 4. Smoke detection, call detection <p>AIOP (Up to 16 models)</p> <p>Model type: detection model, classification model, mixed model (detection model and classification model)</p> <p>1 engines in total, One engine can support four algorithm models; each algorithm model supports one real-time video stream analysis or a maximum of 8 auto-switch video analyses(switch time between 10 to 3600 seconds)</p>
Video and Audio	
IP Video Input	16-ch
Incoming Bandwidth	128Mbps
Outgoing Bandwidth	256 Mbps
Video Output Mode	HDMI1/VGA1 simultaneous output, HDMI2/VGA2 simultaneous output
Audio Output	1-ch, RCA (Linear, 1 K Ω)
Two-Way Audio	1-ch, RCA (2.0 Vp-p, 1 k Ω)
HDMI Output	<p>HDMI1 : 8K (7680 × 4320)/30 Hz, 4K (3840 × 2160)/60 Hz, 4K (3840 × 2160)/30 Hz, 2K (2560 × 1440)/60 Hz, 1080P (1920 × 1080)/60 Hz</p> <p>HDMI2 : 4K (3840 × 2160)/60Hz, 4K (3840 × 2160)/30Hz, 2K (2560 × 1440)/60Hz, 1920 × 1080/60Hz</p> <p>*: When HDMI 1 output resolution is 8K, the maximum HDMI 2 output resolution is 1080p.</p>
VGA Output	VAG1/VGA2:1080P (1920 × 1080)/60 Hz
Decoding	
Decoding Format	H.265/H.265+/H.264/H.264+

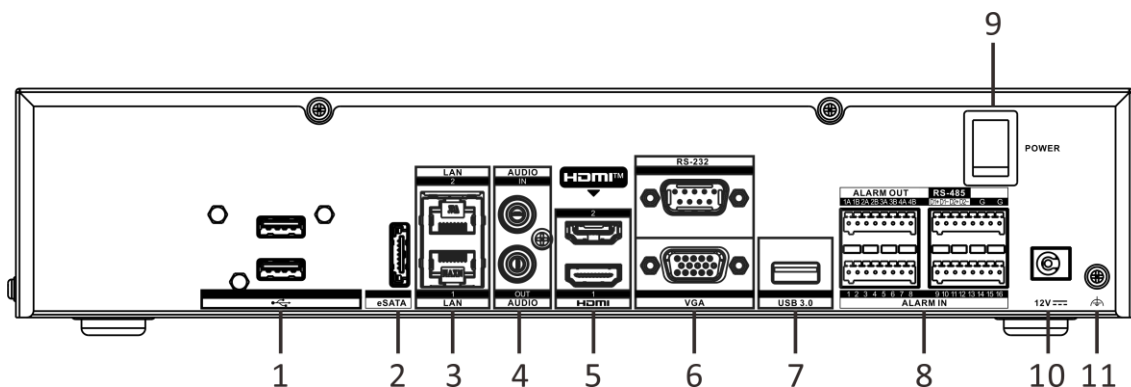
Decoding Capability	Up to 2-ch@32 MP/2-ch@24 MP/4-ch@12 MP/8-ch@8 MP/16-ch@4 MP
Synchronous Playback	16-ch
Recording Resolution	32 MP/24 MP/12 MP/8 MP/6 MP/5 MP/4 MP/3 MP/1080p/UXGA/720p/VGA /4CIF/DCIF/ 2CIF/CIF/QCIF *: NVR supports up to 8-ch 32 MP/24 MP IP video inputs.
Network	
Remote Connection	128
Network Protocol	TCP/IP, DHCP, IPv4, IPv6, DNS, DDNS, NTP, RTSP, SADP, SMTP, SNMP, NFS, iSCSI, ISUP, UPnP™, HTTP, HTTPS
API	ONVIF (profile S/G); SDK; ISAPI
Compatible Browser	IE11, Chrome V57, Firefox V52, Safari V12, Edge V89, or above version
Network Interface	2, RJ-45 10/100/1000 Mbps self-adaptive Ethernet interface
Auxiliary Interface	
SATA	1 SATA interface
Capacity	Up to 16 TB capacity for each HDD, 1 built-in 3.5-inch 1 TB SATA hard disk
Serial Interface	1 RS-232 interface, 2 RS-485 interface
USB Interface	Rear panel: 2 × USB 2.0; Rear panel: 1 × USB 3.0
Alarm In/Out	16/4
General	
GUI Language	English, Russian, Bulgarian, Hungarian, Greek, German, Italian, Czech, Slovak, French, Polish, Dutch, Portuguese, Spanish, Romanian, Turkish, Japanese, Danish, Swedish Language, Norwegian, Finnish, Korean, Traditional Chinese, Thai, Estonian, Vietnamese, Croatian, Slovenian, Serbian, Latvian, Lithuanian, Uzbek, Kazakh, Arabic, Ukrainian, Kyrgyz, Brazilian Portuguese, Indonesian
Power Supply	12 VDC, 5A
Consumption	≤ 60 W
Working Temperature	-10 to 55° C (14 to 131° F)
Working Humidity	10 to 90%
Dimension (W × D × H)	320 × 243 × 70 mm (12.6 × 9.6 × 2.8 inch)
Weight	≤ 5kg

▪ Dimension



Unit:mm [inch]

Physical Interface



No.	Description	No.	Description
1	USB interfaces	7	USB 3.0 interface
2	eSATA interface	8	Alarm in, alarm out, and RS-485
3	LAN interfaces	9	Power switch
4	Audio in and audio out	10	Power supply
5	HDMI interfaces	11	GND
6	VGA interface and RS-232 interface		

Available Model

iDS-6716NXI-M1/AI(B)

Headquarters

No.555 Qianmo Road, Binjiang District,
Hangzhou 310051, China
T +86-571-8807-5998
www.hikvision.com



Follow us on social media to get the latest product and solution information.



Hikvision



HikvisionHQ



HikvisionHQ



Hikvision_Global



Hikvision
Corporate Channel



hikvisionhq