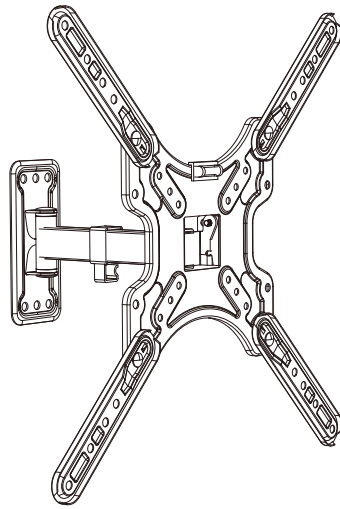
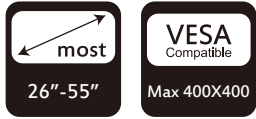
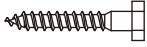

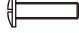
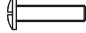









CT-LCD-T3701X Instruction Manual

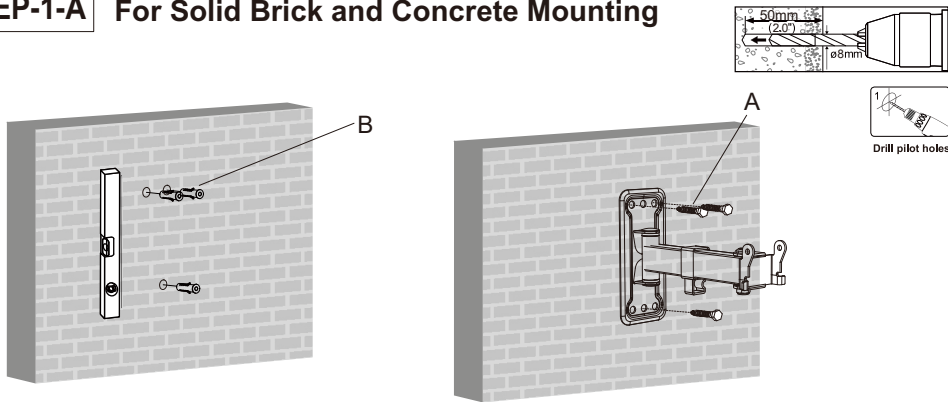


CAUTION: DO NOT EXCEED MAXIMUM LISTED WEIGHT CAPACITY. SERIOUS INJURY OR PROPERTY DAMAGE MAY OCCUR!

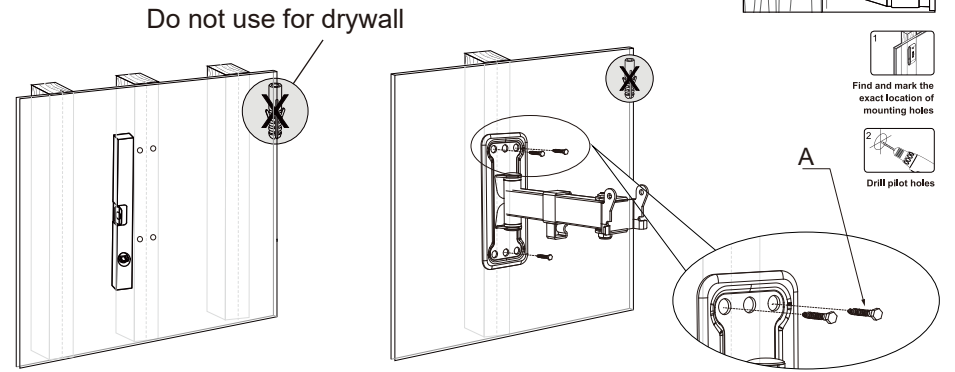
Parts List

- 
 (A) M6x50 Self-tap Screw (3)
- 
 (B) 8x40 Plastic Anchor (3)
Do not use for drywall
- 
 (C) M4x20 screws (4)
- 
 (D) M6x20 screws (4)
- 
 (E) M8x25 screws (4)
- 
 (F) M6 washer (4)
- 
 (G) 10mm Plastic Sleeve (4)
- 
 (H) M6x12 screws (4)
- 
 (I) M6 Cap nut (4)
- 
 (J) X1
- 
 (K) Bubble Level (1)

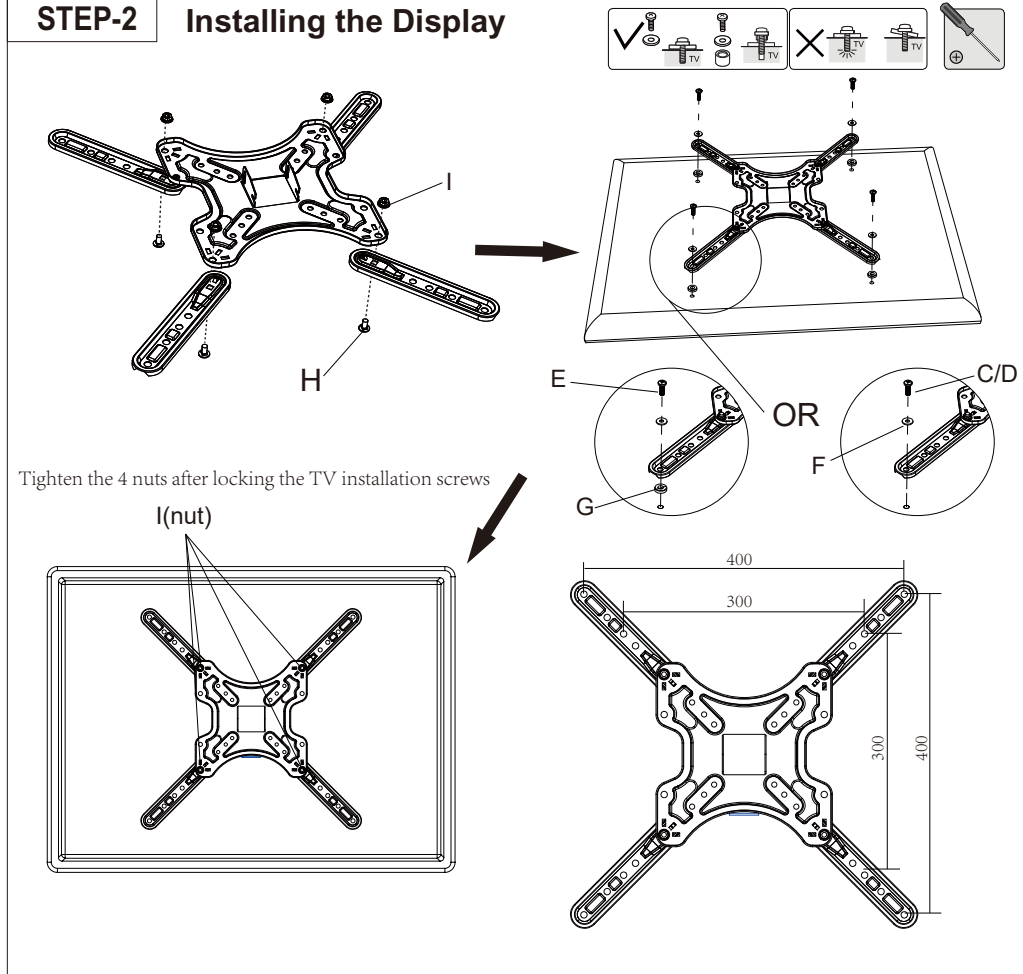
STEP-1-A For Solid Brick and Concrete Mounting



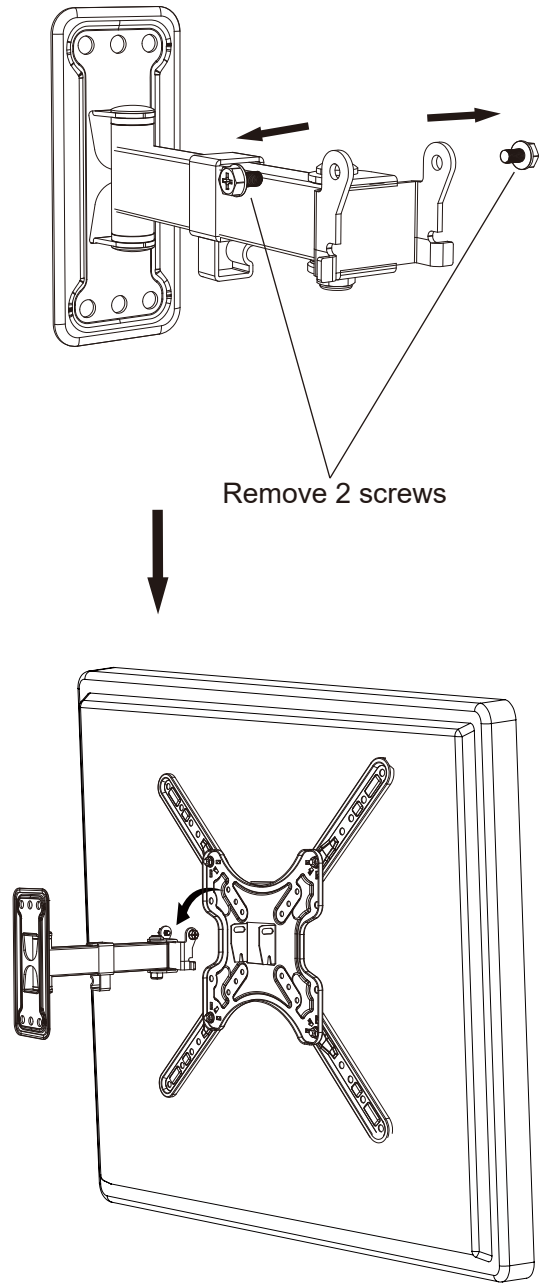
STEP-1-B For Wood Stud Wall Mounting



STEP-2 Installing the Display



STEP-3 Installing the Display



STEP-4 Installing the Display

